



DISCOVER

# AN ABUNDANT LIFE AT GARDEN PARK GROVE

Discover a place where you can create your own piece of paradise, in a thriving community, with a vibrant lifestyle. Your perfect home isn't just about the house you build, it's about the community you live within, and being close to the beauty of nature. Welcome to Garden Park Grove, where you can truly have it all.

Garden Park Grove is ideally located in the well-established community of Sinagra, in the heart of Wanneroo. Shopping, dining and cafes are just around the corner, and you'll be surrounded by an abundance of nature and local parks. Lake Joondalup is just a stone's throw away, and you'll enjoy access to a state of the art library and community hub, and great local schools.

**FUTURE  
PRIMARY  
SCHOOL**  
on your  
doorstep

GARDEN PARK  
**GROVE**  
AN ABUNDANT LIFE



# GARDEN PARK GROVE

## THE HEART OF IT ALL

### UNDER 2KM

#### CHILDCARE

Good Start Early Learning Centre	1.3km
Mini Babini Childcare Centre	800m

#### EDUCATION

Proposed Future Primary School	
--------------------------------	--

#### LIFESTYLE

The Ashby Bar and Bistro	1.4km
--------------------------	-------

#### RECREATION

Brolo Park	900
Caporn Park	1.3km
Edgar Griffith Park	1.3km
Elton Park	1.1km
Mirto Park	800m
San Teodoro Park	600m

#### SHOPPING

Chemist Warehouse Ashby	1.4km
Farmer Jacks	1.2km

### UNDER 3KM

#### CHILDCARE

Sparrow Early Learning	2.3km
------------------------	-------

#### EDUCATION

St Anthony's Primary School	2.5km
Wanneroo Primary School	2.6km

#### LIFESTYLE

Café Elexir	2.5km
Dome Cafe	2.7km
Flames Burger and Grill	2.7km
Wanneroo Sports and Social Club	3km
Wanneroo Villa Tavern	2.5km

#### RECREATION

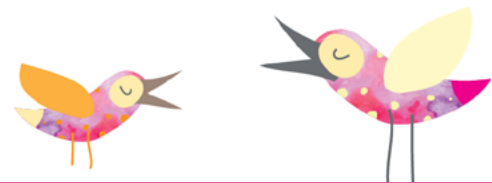
Aqua Motion Pool	2.8km
Lake Joondalup Park	2.1km
Rotary Park	2.6km

#### SHOPPING

Wanneroo Central	2.8km
•Aldi	
•Coles	

#### MEDICAL

Wanneroo GP Super Clinic	2.6km
--------------------------	-------



### UNDER 5KM

#### EDUCATION

St Stephen's	4.4km
Wanneroo Secondary College	3.4km

#### LIFESTYLE

Eagle Falls Spur Steak and Grill	4.2km
----------------------------------	-------

#### RECREATION

Wanneroo Botanic Gardens and Mini Golf	4.6km
Wanneroo Showgrounds and Skate Park	3.4km
Wanneroo Tennis Club	4.2km

### UNDER 10KM

#### EDUCATION

Edith Cowan University	9-10km
Mater Dei College	9.2km
North Metro TAFE	8.9km

#### LIFESTYLE

Currambine Bar and Bistro	10km
---------------------------	------

#### MEDICAL

Joondalup Health Campus	8.4km
-------------------------	-------

#### RECREATION

Carramar Golf Course	6.2km
HBF Arena	7.7km
Neil Hawkins Park	8.6km

#### SERVICES

Joondalup Public Library	8.6km
--------------------------	-------

#### SHOPPING

Lakeside Joondalup Shopping Centre	8.4km
Wanneroo Markets	7.9km

#### TRANSPORT

Edgewater Train Station	8.4km
Joondalup Train Station	9.1km
Whitfords Train Station	8.9km

### UNDER 15KM

#### EDUCATION

Prendiville Catholic College	11.3km
------------------------------	--------

#### LIFESTYLE

Burns Beach & Café	10.2km
Mullaloo Beach Hotel and Restaurant	12.7km

#### RECREATION

Iluka Beach	11.7km
Joondalup Resort and Golf Course	10.4km
Mullaloo Beach	13.3km
Ocean Reef Boat Harbour	13km

#### SHOPPING

Currambine Central	10.2km
Westfield Whitford City	12.4km

Contact Damyn Strang on 0434 070 654  
[www.gardenparkgrove.com.au](http://www.gardenparkgrove.com.au)

### AN ABUNDANT LIFE

Disclaimer: This plan is for illustrative purposes only. The Vendor reserves the right to amend this plan at any time in its absolute discretion. Please check with the Selling Agent for up-to-date information.

GARDEN PARK  
**GROVE**

