

# GARDEN PARK GROVE

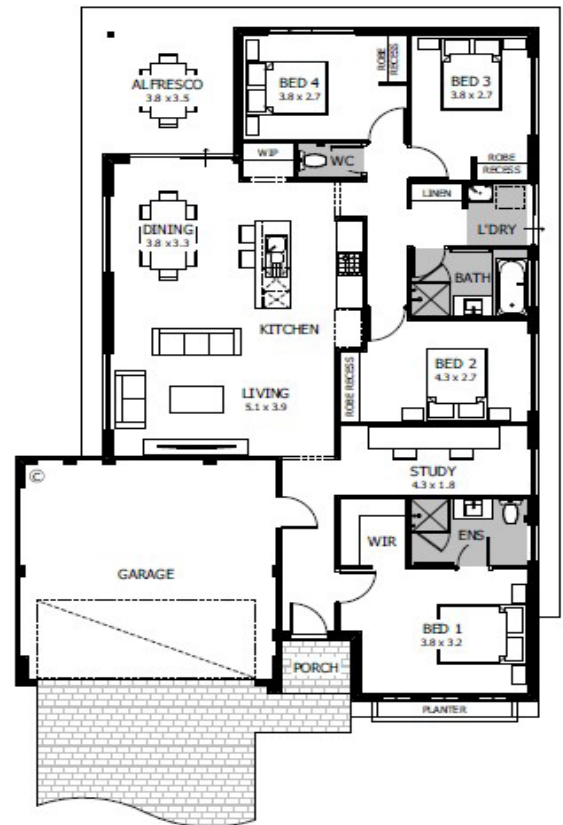
15 x 30m | 450sqm



## The Bondi | 4 x 2 x 2

from **\$570,550\***

- Spacious four bedroom, two bathroom home
- An open-plan living, dining and kitchen area
- Large master bedroom with private ensuite and walk-in robe
- Private study nook
- Double garage or carport option available
- 25 year Structural Guarantee ENQUIRE NOW 4 Beds 2 Baths 2 Car Spaces Min Lot Width 15m



**Callum Hearne**  
0466 431 321

\* Photos for illustrative purposes only and may not comply with design guidelines. Prices subject to change without notice.

[www.gardenparkgrove.com.au](http://www.gardenparkgrove.com.au) | 0434 070 654

