



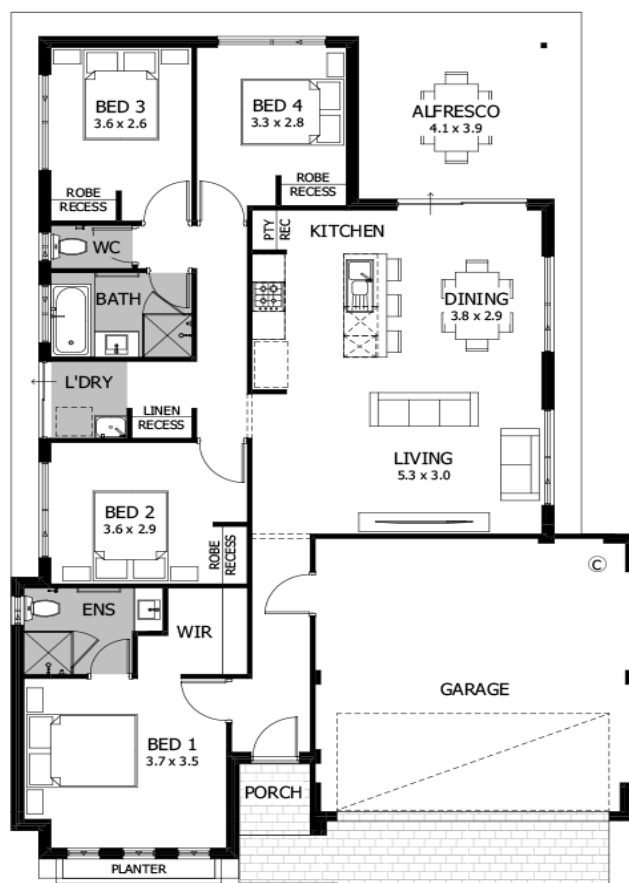
12.5 x 30m | 375sqm



The Bronte | 4 x 2 x 2

from **\$506,680***

- Spacious four bedroom, two bathroom home
- Open plan family, dining and kitchen space
- Kitchen with 600mm oven, hotplate, rangehood with tiled or glass splashback
- Master suite with walk-in robe and ensuite bathroom
- Clever design makes great use of storage throughout
- Double garage or carport option available Fixed siteworks



Callum Hearne
0466 431 321

* Photos for illustrative purposes only and may not comply with design guidelines. Prices subject to change without notice.

www.gardenparkgrove.com.au | 0434 070 654

